

# HI-LINES

A NEWSLETTER FOR JO-CARROLL ENERGY MEMBERS

CONTENTS



Elizabeth, Illinois



800-858-5522



www.jocarroll.com



## 18D-E

### Sand Prairie update

Exciting news for fiber members



## 18F

### Lineworker Appreciation Day

Honoring co-op linemen on April 11



## 18H

### Power of co-op membership

RSVP to the 2022 annual meeting



## Environmental stewardship

As spring and Earth Day approach, we are reminded of new life and how immensely important it is to protect the environment we live in. Earth Day raises awareness and is meant to be spent celebrating the planet's clean natural resources. In recent years, the day has been used to raise awareness about global climate change and efforts leading to clean energy.

Earth Day allows us a day each year to reflect and remember the significance of the health of the planet and what we can all do to help ensure that health. It also allows for a day of education about environmental issues affecting our planet every year.

One of Jo-Carroll Energy's core values is environmental stewardship. Jo-Carroll feels strongly that energy conservation starts with improving the efficiency of your home and/or business. Through our Energy Detective Program, we offer free home assessments, low priced energy audits that are reimbursed if recommendations are implemented and incentives designed to help members save money and promote energy efficiency.

Prior to making decisions on heating, ventilation and cooling systems (HVAC), the addition of renewable energy and/or other distributed energy systems such as geothermal HVAC energy storage or electric vehicle charging, please reach out to our Energy Detective, John Scott,



### CEO'S REPORT

by Mike Casper

who can provide recommendations to maximize the value that you may consider investing in technology and/or distributed energy resources.

At the deadline of this column, Jo-Carroll has assisted more than 500 members with adding solar. We have also developed close to 2 MWs of community solar, which is nearly fully subscribed, for those members who want to support renewable energy, but don't have the option to add solar to their residence.

Jo-Carroll also worked closely with our generation and transmission cooperatives, of which we are an owner and purchase our wholesale power needs, to develop a green energy program that provides our members an option to offset all or a portion of their electric load with green energy. Recently, the city of Galena chose to participate. This is another option for our members to support renewable energy and off-set their electric usage with 100 percent renewable energy.

The above is just a snapshot of Jo-Carroll's commitment to environment and stewardship, and doing our part to improve the health of our environment.

## For your information

### Your Board of Directors:

**David Senn**  
Chairman  
District 7

**Russell Holesinger**  
Vice Chairman  
District 8

**Marcia Stanger**  
Secretary  
District 3

**Jerry Meyer**  
District 1

**Joseph Mattingley**  
District 2

**Dan Tindell**  
District 4

**Patricia Smith**  
District 5

**Thomas Lundy**  
District 6

**Larry Carroll**  
District 9

**Robert Kuhns**  
Treasurer  
District 10

### Office Hours:

Monday-Friday

**Elizabeth**  
793 U.S. Route 20 West  
7:30 a.m. to 4 p.m.

**Savanna**  
103 Chicago Ave.  
7:30 a.m. to 1 p.m.  
1:30 to 4 p.m.

**Geneseo**  
1004 S. Chicago St.  
7:30 a.m. to 1 p.m.  
1:30 to 4 p.m.

### Services and Billing Questions:

(800) 858-5522  
www.jocarroll.com

### For emergencies and outages call:

(800) 858-5522

# Resume of Minutes

January 28, 2022

*The regular board meeting of Jo-Carroll Energy, Inc. (NFP) was held on Friday, January 28, 2022, at 9:00 A.M., via Zoom.*

*A Safety Moment was provided by Director Dan Tindell on seatbelt safety.*

**Approval of Agenda** – A motion was made, seconded and carried unanimously to approve the agenda.

**Consent Agenda** – A motion was made, seconded and carried unanimously to approve the consent agenda.

**Presentation** – Kyle Buros, Senior V.P. and Chief Operating Officer provided a review of the 2021 goals.

**Financial Operating Report** – Chuck Woods, Chief Financial Officer provided a summary of the financial operating report for December. Year to date (YTD) revenue is approximately \$64.7 million vs. a budgeted amount of approximately \$63.9 million. Total operations and maintenance expenses were approximately \$1.9 million under budget. YTD margins are approximately \$5.9 million vs. a budgeted amount of approximately \$2.3 million. By general consent, the board moved to file the financial operating report with the auditor. In addition, Woods noted that the auditors were recently onsite to perform their yearly audit.

**CEO Report** – President and CEO Casper commented on the American Public Gas Association (APGA) Legislative meeting that he recently attended, noting that he met with U.S. Senators Tammy Duckworth, Dick Durbin and U.S. Congresswoman Cheri Bustos offices asking for legislation to prevent future extreme weather energy market crisis and to reform Section 5 of the Natural Gas Act.

### Board Issues and Action Items

**Approve 2022 Electric and Natural Gas Rates** – A motion was made, seconded and carried unanimously to approve the 2022 Electric and Natural

Gas Rates.

**Authorize to Retain the Firm (DAY PITNEY, LLP) for Representation of the NGPL Intervenor Group** – A motion was made, seconded, and carried unanimously to approve Jo-Carroll Energy's President and CEO to sign the engagement letter authorizing DAY PITNEY, LLP to represent Jo-Carroll Energy as part of a client coalition.

**2022 BKD Service Contract** – A motion was made, seconded, and carried unanimously to approve the 2022 BKD Service Contract.

**Select Attendees for the NRECA Course 2640 Financial Decision Making** – Attendees were selected to attend NRECA Course 2640/Financial Decision Making. In addition, attendees were selected to attend NRECA Course 953/Improving Board Decision Making Quality.

**Certify Voting Delegate/Alternate Voting Delegate for the NRECA Annual Member Business Meeting** – Voting Delegates were selected.

**Select Voting Delegate/Alternate Voting Delegate for the NRTC Business Meeting (in conjunction with the NRECA Annual Member Business Meeting)** – Voting Delegates were selected.

**Select Attendees for the Dairyland District Meeting** – Attendees were selected to attend the Dairyland District Meeting in February.

### Operations and Regulatory/Legislative Update

**Operations Update** – Kyle Buros, Senior V.P. and Chief Operating Officer provided a summary of the 2022 Strategic Plan, describing the

goals and their key results to be achieved once completed.

#### COVID-19/Employee Update

– V.P. of Human Resources, Merri Sevey provided an update on Covid-19 procedures and statistics.

#### Fiber Messaging Update –

Jennifer Meyer, V.P. of Member Services provided an overview of the fiber expansion messaging map, highlighting the ways in which we seek opportunities through grants and member interest to build out fiber-to-the-premise internet services in Northwest Illinois.

#### External Affairs/Legislative Update – None.

#### Governance Topics and Board Policy Review – None.

#### Reports/Updates

**Association of Illinois Electric Cooperatives (AIEC) Report –** Chairman Senn provided highlights from the AIEC Board Meeting. In addition, President and CEO Casper noted that the Illinois Electric Cooperative

Distributed Generation (DG) Policy Review Committee recently met to develop net metering recommendations.

#### American Public Gas Association (APGA) Report –

Director Carroll discussed the various topics within the natural gas (NG) industry. Casper noted that twelve new members joined APGA. Several were from Illinois.

#### Dairyland Power Cooperative (DPC) –

Director Mattingley provided highlights from the DPC Board Meeting.

#### Prairie Power Incorporated (PPI) Report –

Director Kuhns provided a summary of the PPI Board Meeting. Casper reported that in 2021 the Prairie State Energy Facility

had nearly a 91 percent equivalent availability factor, the best year of operation since being commissioned.

**Executive Session –** A motion was made, seconded and carried unanimously to go into executive session at 11:21 a.m.

**Out of Executive Session –** A motion was made, seconded and carried unanimously to come out of Executive Session at 11:27 a.m.

**Action Resulting from Executive Session –** None.

**Other Business –** None.

**Adjournment –** Chairman Senn adjourned the meeting at 11:28 a.m.

### Reader prize

Each month we print the name of a Jo-Carroll Energy member who is eligible to win a monthly \$25 readership prize. If your name is printed in this month's edition, and not a part of any article, contact Jo-Carroll Energy.



## Director earns gold credentials

Dave Senn, Jo-Carroll Energy board chairman (right), congratulates District 4 director Dan Tindell for achieving the Director Gold Credential. The National Rural Electric Cooperative Association (NRECA) created the credential program to recognize directors committed to continuing their education beyond the "Credentialed Cooperative Director" and "Board Leadership Certificate" levels. To earn the credential, a director must hold the CCD and BLC credentials and earn three additional credits from the BLC course series.



# EXCITING NEWS FOR OUR FIBER MEMBERS



## Sand Prairie fiber subscribers are getting a speed increase at no additional cost

We've recently made all standard fiber packages symmetrical—upload speeds now match download speeds—providing increased value to our members. Existing fiber members won't need to do anything to take advantage of these increased upload speeds.

The benefit of fiber broadband is touted not only as a superior product but because it can provide symmetrical speeds. We are providing our members this benefit now to support the growing demand for cloud-based services, remote work and remote education. Federal Communications Commission (FCC) data supports this showing a trending increase in both home and business bandwidth use. Offering symmetrical speeds enhances the future-proof characteristics of fiber by putting our members in a position where they can grow into high-bandwidth use.

Fiber - Link Home	Fiber-Link	Giga-Link	Hyper-Link
<b>\$59<sup>99</sup>/mo</b>	<b>\$74<sup>99</sup>/mo</b>	<b>\$99<sup>99</sup>/mo</b>	<b>\$299<sup>99</sup>/mo</b>
25Mbps Download Speeds 25Mbps Upload Speeds	250Mbps Download Speeds 250Mbps Upload Speeds	1000Mbps Download Speeds 1000Mbps Upload Speeds	2000Mbps Download Speeds 2000Mbps Upload Speeds
<ul style="list-style-type: none"> <li>Ideal for 1-4 devices</li> <li>No data caps and no contracts</li> <li>Managed Wi-Fi Router included</li> </ul>	<ul style="list-style-type: none"> <li>Ideal for 5-15 devices</li> <li>No data caps and no contracts</li> <li>Managed Wi-Fi Router included</li> </ul>	<ul style="list-style-type: none"> <li>Ideal for 15+ devices</li> <li>No data caps and no contracts</li> <li>Managed Wi-Fi Router included</li> </ul>	<ul style="list-style-type: none"> <li>Ideal for 50+ devices</li> <li>No data caps and no contracts</li> <li>Managed Wi-Fi Router included</li> </ul>

*Fiber-Link Home for residential use only*

## FIBER COMMUNITIES PROGRESS

### INTEREST

Albany .....	ALB 1-4
Apple River .....	APR 1,2
Chadwick .....	CDW 4,5
Chestnut .....	CHT 3
East Dubuque .....	ED 2-10
Elizabeth (rural area) .....	ELZ 12
Fulton .....	FUL 1-9
Galena .....	G1-3,5,9,10,11,24,25
Hanover .....	HAN 3-6
Lake Carroll .....	LCL 1-9
Morrison .....	MSN 1-16
Mount Carroll .....	MTC 1-3,5,6,8
Prophetstown .....	PHT 1-5
Savanna .....	SAV 2,3,6,9,10
Stockton .....	STK 1-5
Thomson .....	THN 1-3
Warren .....	WRN 2-4

### SIGN-UP

Apple Canyon Lake .....	CYN 9
Elizabeth .....	ELZ 1-6, 8-10
East Dubuque .....	ED 1
Chestnut .....	CHT 1
Galena .....	G4,7,12,14
Galena Territory .....	GT 1,8,9,11
Savanna .....	SAV 4,5,7,8
Stockton .....	STK 6

### PRE-CONSTRUCTION

Chadwick (rural area) .....	CDW 1,2
Council Hill (rural area) .....	CPR 1
Elizabeth (includes rural areas) .....	ELZ 11, WBN 1
Fenton .....	FTN 1
Galena .....	G19
Galena Territory .....	GT 15
Garden Plain .....	GPN 1
Hanover (includes rural areas) .....	HAN 1,2
Mount Carroll (rural area) .....	MTC 9
Nora (rural area) .....	NOR 1
Sand Ridge (East Dubuque/Menominee area) .....	SR 1
Schapville (rural Scales Mound area) .....	CYN 8
Sinsinawa .....	MEN 2,3
Savanna (rural Savanna areas) .....	PAL 1,2

### CONSTRUCTION

Chadwick .....	CDW 3
Galena (includes rural areas) .....	G6,13,18,20,21
Galena Territory .....	GT 7
Mount Carroll (includes rural areas) .....	MCS 1, MTC 7
Scales Mound .....	SM 3
Sand Ridge (East Dubuque/Menominee area) .....	SR 2
Warren .....	WRN 1
York .....	YRK 2

### SCHEDULE INSTALL

Apple Canyon Lake .....	CYN 4
Chestnut .....	CHT 2
Galena .....	G16
Galena Territory .....	GT 6,14
Mount Carroll .....	MTC 4
York .....	YRK 1
Savanna .....	SAV 1,11

### FIBER IN-SERVICE

Apple Canyon Lake .....	CYN 1-3, 5-7
Elizabeth .....	ELZ 1-6, 8-10
East Dubuque .....	ED 1
Chestnut .....	CHT 1
Galena .....	G0,8,15,22,23
Galena Territory .....	GT 5,10,13
High Ridge (rural Galena area) .....	G17
Scales Mound .....	SM 1,2
Sinsinawa .....	MEN 4

Sign-Up Today!

*Status as of press deadline.*

## FIBER COMMUNITIES MAP



**1. Interest**  
tells us where to build next



**2. Sign-Up**  
and choose your package



**3. Pre-Construction**  
is underway



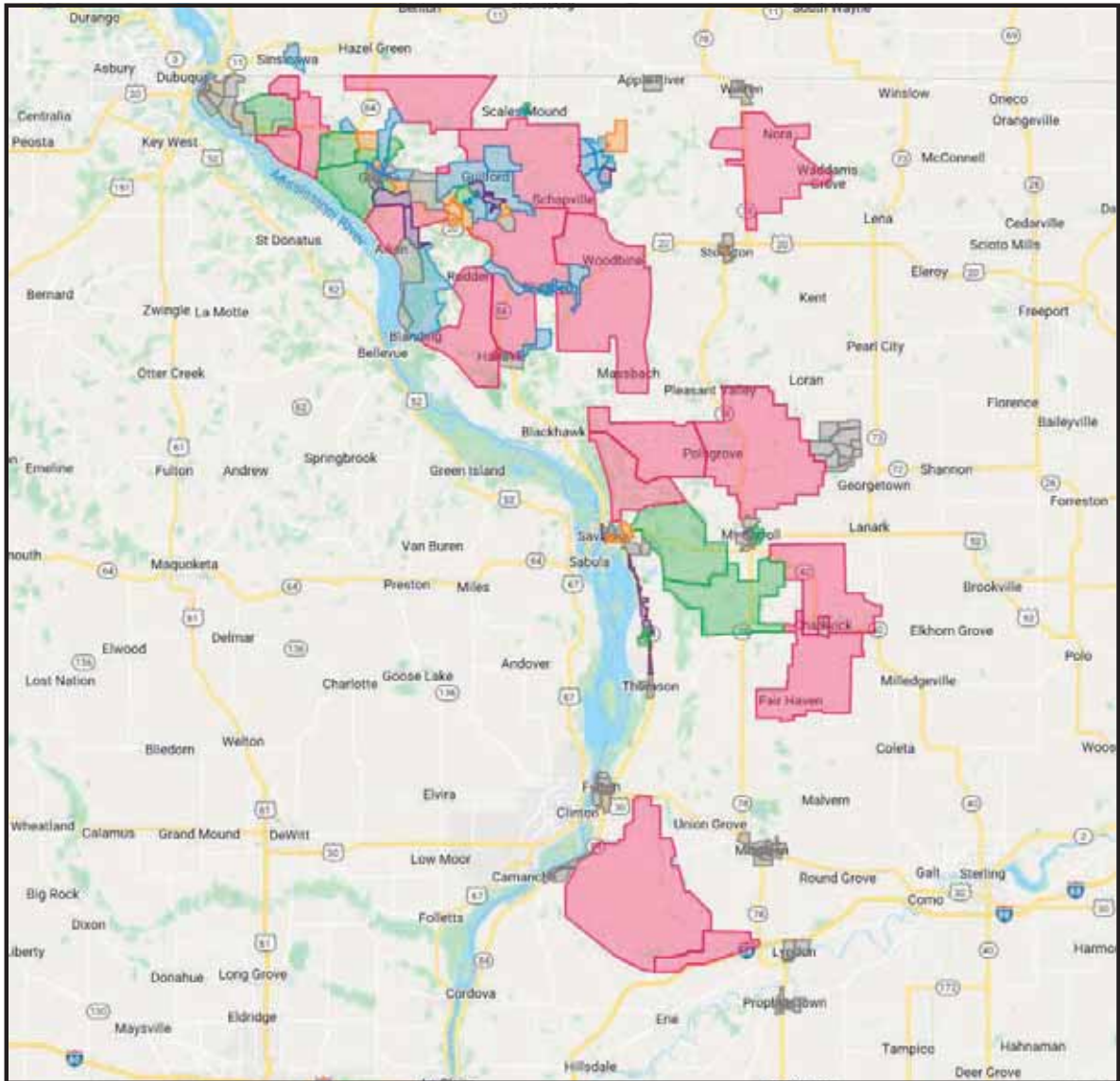
**4. Construction**  
has started



**5. Schedule Install**  
and get ready for Fiber



**6. Fiber Install**  
is complete



Map data ©2022 Google

Last Updated: 3/1/22

### Track Our Progress

Visit [connectSP.com/fiber/communities](https://connectSP.com/fiber/communities) to find your neighborhood and see if service is available in your area.  
Get connected or express your interest at:

[connectSP.com/iwantfiber](https://connectSP.com/iwantfiber)



**Sand Prairie**  
A service of Jo-Carroll Energy



800-858-5522



[connectSP.com](https://connectSP.com)



793 US 20 West, Elizabeth, IL 61028



## JCE observes Lineworker Appreciation Day April 11

It's no secret that a line-worker's job is tough – but it is a job that's essential and must be done, often in challenging conditions.

This month, Jo-Carroll Energy will celebrate Lineworker Appreciation Day on April 11 to honor the hard-working co-op employees who

just a job, it's a lifestyle with long hours and ever-present danger. Lineworkers often work non-traditional hours, outdoors in difficult conditions. While the job does not require a college degree, it does require technical skills, years of training and hands-on learning.

Did you know that to become a journeyman lineworker can take more than 7,000 hours of training? That's because working with high-voltage equipment requires specialized skills, experience and an ongoing mental toughness.

Despite the many challenges, JCE's lineworkers are committed to powering our local communities. During severe weather events that can bring power outages, lineworkers are among the first ones called.

They must be ready to leave the comfort of their home and families unexpectedly, and they don't return until the job is done.

Being a lineworker may not seem like a glamorous job, but it is essential to the life of our community. Without the exceptional dedication and commitment of these hard-working men and women, we simply would not have the reliable electricity that we need for everyday life.

The next time you see a lineworker, please thank them for the work they do to keep power flowing, regardless of the time of day or weather conditions. After all, lineworkers are the power behind your power. Please join us as we recognize them on April 11 and follow “#ThankALineworker” on social media to see how others are recognizing lineworkers.



keep the lights on 365 days a year.

Lineworkers are committed to their career – it's not

### Digging into an Outdoor Project?

Before you dig, dial 811 or visit [call811.com](http://call811.com) to protect underground utilities. Careless digging poses a threat to people, pipelines and underground facilities. Contact 811 first and help keep our community safe.



# We Trees, Too.

We know everyone in our community enjoys the beauty and shade trees provide. But trees and power lines can be a dangerous mix without regular trimming during the growing season.

**If you see our contractor, Zielies Tree Service, in the community trimming, remember the many benefits it brings:**

- Keeps power lines clear of tree limbs
- Helps us restore power outages more quickly
- Keeps crews and members of our community safe
- Reduces unexpected costs for repairs

**Trimming improves service reliability for you, the members we serve.**



## Plant Trees Safely

**Before you dig, call 811 to locate buried utility lines.**

### LOW TREE ZONE

Avoid planting within 20 ft. of power lines. If planting is unavoidable, only plant shrubs and small trees that reach a mature height of 15 ft. or less.

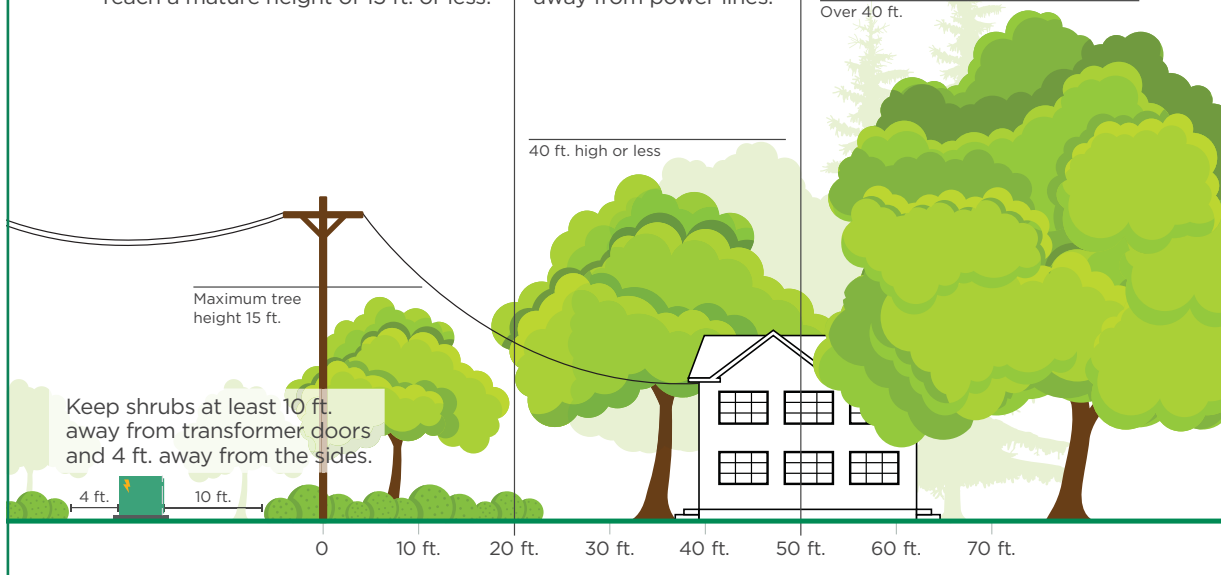
### MEDIUM TREE ZONE

Plant medium trees (under 40 ft. when mature) at least 25 ft. away from power lines.

### LARGE TREE ZONE

Plant large trees (over 40 ft. when mature) at least 50 ft. away from power lines.

Over 40 ft.







# Jo-Carroll Energy

Your Touchstone Energy® Cooperative 

## POWER OF CO-OP MEMBERSHIP

## 2022 ANNUAL MEETING OF MEMBERS

**Thursday, June 2, 2022 | Fulton High School**

1207 12th Street, Fulton, IL 61252 / Please use 13th Ave Entrance by gym

**4:30 pm** : Member Registration | **6 pm** : Meeting | **7 pm** : Dinner (details to come)

*Activities for kids ages 5-12 during the meeting. Check [jocarroll.com/annual-meeting](http://jocarroll.com/annual-meeting) for updates.*

**PleasersVP** by May 6, 2022 via one of the following methods

NAME \_\_\_\_\_

MEMBER # \_\_\_\_\_ *located on your bill*

Street Address \_\_\_\_\_

*Address where you receive JCE and/or Sand Prairie service.*

City \_\_\_\_\_ Zip Code \_\_\_\_\_

# Attending: Adults \_\_\_\_\_ Kids \_\_\_\_\_

*Ages 5-12*

- Complete the survey at [jocarroll.com/annual-meeting](http://jocarroll.com/annual-meeting)
- Return this form to any Jo-Carroll Energy office dropbox located in Elizabeth, Savanna or Geneseo
- Mail this form to PO Box 390, Elizabeth, IL 61028
- Call 800-858-5522 ext. 1208

**793 U.S. Route 20 West, P.O. Box 390  
Elizabeth, IL 61028 | [jocarroll.com](http://jocarroll.com)**



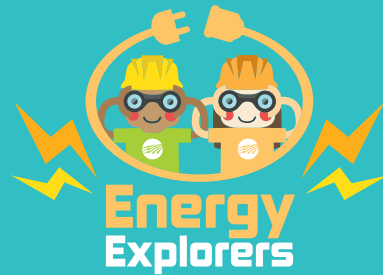
# DO YOU KNOW ABOUT LINEWORKERS?

Every April, we celebrate lineworkers and the hard work they do to make sure we have electricity to power our lives.

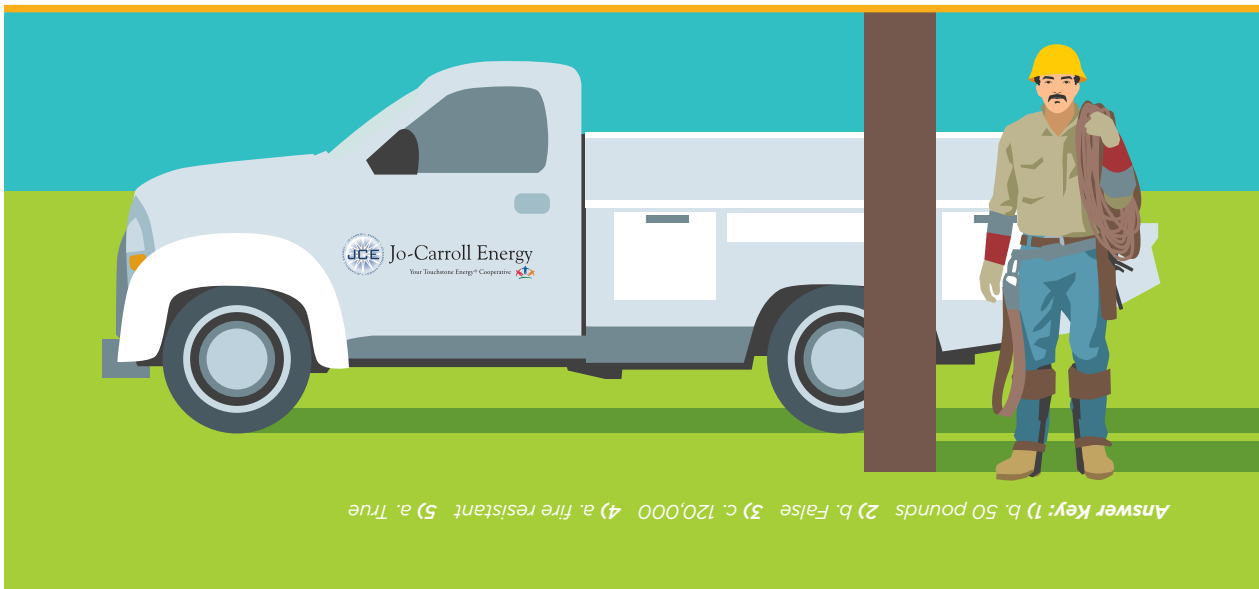
**How much do you know about lineworkers?**

**Take the quiz below to find out!**

**(Use the answer key to check your work.)**



1. Lineworkers have to wear a lot of gear to do their jobs. A lineworker's gear can weigh up to \_\_\_\_\_.  
a. 15 pounds                      b. 50 pounds                      c. 80 pounds
2. Lineworkers maintain and repair electrical lines, but they do not install them.  
a. True (no installation)      b. False (They maintain, repair *and* install lines.)
3. There are approximately \_\_\_\_\_ lineworkers in the United States.  
a. 50,000                      b. 90,000                      c. 120,000
4. Lineworkers must wear \_\_\_\_\_ clothing to protect them from a possible electric arc while working.  
a. fire resistant                      b. extra thick                      c. leather or rubber
5. Lineworkers must wear special conductive boots when climbing a steel structure.  
a. True                      b. False



**Answer Key:** 1) b. 50 pounds 2) b. False 3) c. 120,000 4) a. fire resistant 5) a. True